

**ILS Laboratories**

8222 Vickers St, Suite 106, San Diego, CA 92111  
(619) 329-3999 | ils-lab.com

## GLP1-Sema - 20mg

Tested for: PeptidePlugs  
peptideplugs.com


COA #: **COA-2026-3BGEA5**  
Lot Number: **125-01-SM**  
Accession #: **ACC-2026-3509**  
Labeled Content: **20mg**

Method: **Full QC Panel**  
Analysis Date: **06/09/2026**  
Appearance: **Good**  
Sample Matrix: **Lyophilized**  
Date Received: **05/29/2026**

**PASS**



Scan to verify authenticity at ils-lab.com  
Access Code: 3UUYKBTX

Identity	Peptide Purity	
<b>GLP1-Sema</b>	<b>99.07%</b>	

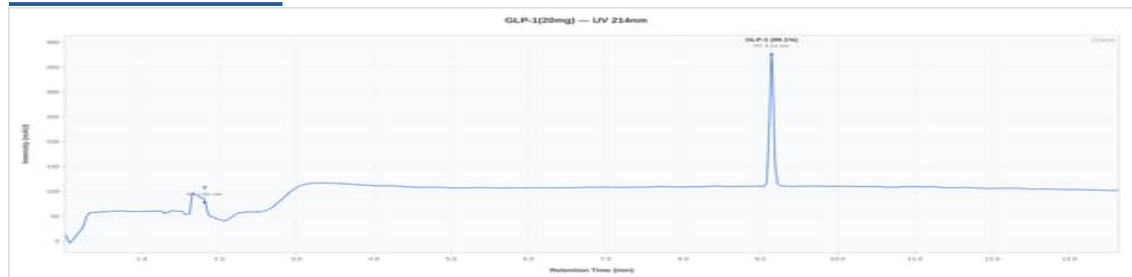


GLP1-Sema 20mg - 125-01-SM

### Full QC Panel

Analyte	Specification	Result	Unit	Status
Peptide Purity (HPLC)	>= 95.0%	<b>99.07%</b>	%	<b>PASS</b>
Net Peptide Content	Report Only	<b>20.52</b>	mg	N/A
Identity (HPLC-RTM)	Semaglutide	<b>Confirmed</b>	-	<b>PASS</b>
Fentanyl Screen	Immunoassay, 50 ng/mL cutoff	<b>Not Detected</b>	-	<b>PASS</b>

### HPLC Chromatogram



GLP1-Sema 20mg - 125-01-SM: UV Chromatogram

### Heavy Metals Analysis (ICP-MS)

Test	Specification	Result	Status
Arsenic (As)	NMT 1.5 ppm	<i>Not Detected</i>	<b>PASS</b>
Cadmium (Cd)	NMT 0.5 ppm	<i>Not Detected</i>	<b>PASS</b>
Chromium (Cr)	NMT 10 ppm	<i>Not Detected</i>	<b>PASS</b>
Mercury (Hg)	NMT 1.5 ppm	<i>Not Detected</i>	<b>PASS</b>
Lead (Pb)	NMT 1 ppm	<i>Not Detected</i>	<b>PASS</b>

### Sterility Testing (PCR)

Test	Specification	Result	Status
Sterility (PCR)	No Growth	<b>No Growth</b>	<b>PASS</b>




**Dr. Greg Kalyuzhny**  
Lab Director  
6/9/2026

COA #: **COA-2026-3BGEA5**  
Access Code: **3UUYKBTX**  
Verify: [portal.ils-lab.com/verify/gB\\_fWqzhKIXjXFge](https://portal.ils-lab.com/verify/gB_fWqzhKIXjXFge)  
Issued: 6/9/2026

**Endotoxin Testing (USP <85>)**

Test	Specification	Result	Status
Endotoxin (USP <85>)	Report Result	NMT 0.05 EU/mL	Reported

*About this result: Endotoxin is reported as a quantitative value. Acceptable limits vary by product type and matrix, so no universal pass/fail threshold applies to RUO products. This result is below commonly referenced endotoxin thresholds.*

**Notes & Methodology**

1. Date Tested: 06/09/2026. Methods: Full QC Panel.
2. The sample was confirmed to be GLP1-Sema by HPLC. Identification by chromatographic retention time comparison with a reference standard.
3. Elemental impurities analyzed by ICP-MS per USP <233> methodology. Acceptance criteria are internal laboratory quality screening limits for research-use materials and do not represent evaluation against any specific pharmacopeial monograph or product specification.
4. Endotoxin tested per USP <85> kinetic turbidimetric method. Acceptance criteria per client specification.
5. Peptide purity determined by RP-HPLC area normalization at 214 nm. Value represents the percentage of the target peptide relative to all peptide-related peaks. Non-peptide process-related impurities, if detected, are excluded from the calculation.



**Dr. Greg Kalyuzhny**  
Lab Director  
6/9/2026

COA #: **COA-2026-3BGEA5**  
Access Code: **3UUYKBTX**  
Verify: [portal.ils-lab.com/verify/gB\\_fWqzhKIXjXFge](https://portal.ils-lab.com/verify/gB_fWqzhKIXjXFge)  
Issued: 6/9/2026